

How to draw

Hair

in my style

∴ Trust the process ∴



+ Feel free to add accessories!

like this:



bow



hairclip



imagine this is a good hair clip ☺



1 Draw face and leave guidelines



2 Draw the skull shape

↳ this will give you guidelines of where to draw the hair



3 Check where the ears are and see, whether to draw them or not
Sketch the outline of hair



4 Draw outline with pen & delete guidelines



5 Color in the base color (with highlighter)

my color: ●



6 With the same color (mine: ●), shade darker areas.

Next page →
or ↓

7



Using a darker color
(•) shade the darker areas

8



using the outline color shade the dark areas like - using pen!
that in these shapes



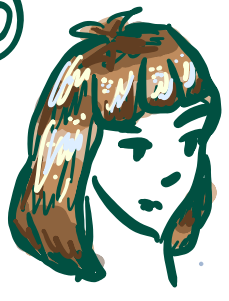
9



Use the darkest color and - using pen!
Shade more
↳ these shapes only



10



Using these colors - using pen!
→ have to be kind of behind each other
add lighting stuff
in these shapes and ::

11



Time to use white!
For glitter add finishing touches
also pen lol

★ ofc this can be applied to any gender → follow the same steps



Done!

Hope you found this kinda useful ♡